



Structured Energy Management

Patriot Energy's Structured Energy Management, as provided by licensed suppliers, simulates the wholesale energy market and delivers a wholesale pricing structure to the retail client that, in turn, drives down costs. This solution leverages the benefits of hourly index pricing as it clears on the energy market and allows you, our client, to directly benefit with wholesale energy purchasing.

Keeping in step with aligning our client's experience with the wholesale markets, the supplier will bill on the first of each month. Since the wholesale energy markets measure and invoice on the calendar month, this structure is passed on to you. The differences in usage between the monthly estimate and the utility's off-calendar meter read cycle are balanced and debited/credited on your future invoices. This results in a true tracking of wholesale purchasing.

Electricity is priced hourly throughout the day and the price is largely dependent upon overall demand. Traditionally, during "off-peak" times, electricity on the exchange is often drastically less expensive than during "peak" times, sometimes even zero. Yet most utility offerings as well as competitive programs do not allow for the individual customer to benefit from this.

In many cases, you will be able to receive multiple accounts in a convenient consolidated summary format. This would enable you to receive one monthly mailing of invoices for all of your locations, which will save you time and money by making the billing process simpler and efficient.

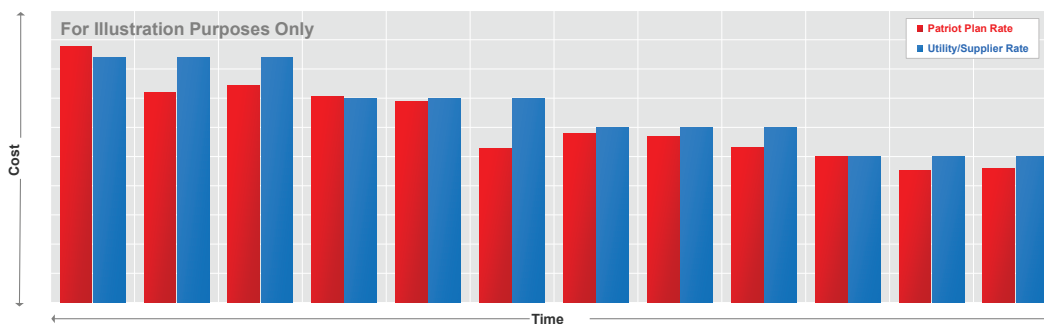
You will be provided with an itemized breakout of all additional costs associated your wholesale energy product on your monthly invoice. Along with wholesale energy, the four layered costs associated with bringing a wholesale energy purchase to retail delivery are Installed Capacity, Renewable Energy Requirements, ISO Ancillary Costs and the Suppliers Administrative Service Fee.

Exercising your purchasing power in this manner is the closest possible way to buy electricity in the wholesale arena, other than being an actual member of the Independent System Operator ("ISO"). The Patriot Plan allows for businesses of all sizes to participate in a pricing structure typically available only to wholesale users or suppliers who are members of the ISO. At Patriot Energy, we strive to provide you the power of choice.

Key Points

- Billing and Calendar Months are Aligned
- Power is Purchased on an Hourly Basis
- Multiple Account Billing
- Transparency
- Patriot Plan Compared to Utility/Supplier

Patriot Plan vs. Utility/Supplier



info@patriotenergygroup.com | (800)343-4410 | www.patriotenergygroup.com

Patriot Energy neither represents nor guarantees that this plan will result in higher or lower costs in the future when compared to the utility's Basic Service price. This document is not a contract for electric supply and Patriot Energy does not warrant the terms above fully or accurately represent the terms of actual electric supply. ©2013 Patriot Energy Group. All Rights Reserved.

